

Estell Manor Park Trail Map



109 State Highway 50, Mays Landing NJ 08330
(609) 645-5960

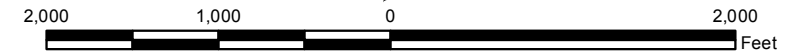
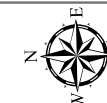
Park Hours 7:30 AM until Dusk

Nature Center Hours 8:00 AM-4:30 PM, Mon-Fri.
8:00 AM-4:00 PM Weekends, Holidays.

http://www.aclink.org/PARKS/mainpages/estell_trails.asp

Legend

- | | |
|---------------------------------|---------------------|
| Parking | US & State Highways |
| Mountain Bike Trail | Municipal Streets |
| Multi-purpose Trail | Cemetery |
| Boardwalk | Open Field |
| Exercise Trail | Athletic Field |
| Vehicle Accessible Roads | Playground |
| Paved | Water |
| Unpaved | Estell Manor Park |



General and Historic Points of Interest

- | | |
|----------------------------|---------------------------|
| A. Nature Center | K. Group Camping Area |
| B. Picnic Area #1 | L. Shaw House |
| C. Observation Deck | M. Manor House |
| D. Picnic Area #2 | N. Estellville Glassworks |
| E. Floating Dock | O. Steelman Cemetery |
| F. Native American Village | P. Collins House Ruins |
| G. Picnic Area #3 | Q. Smith/Ireland Cemetery |
| H. Swamp Trail Boardwalk | R. Artesian Well |
| I. South River Access Area | S. BLC Powerhouse Ruins |
| J. Camping Area | |

This map is for demonstration purposes only and was not developed in accordance with National Map Accuracy Standards. Any use of this product with respect to accuracy and precision shall be the sole responsibility of the user. The map was developed, in part, using New Jersey Department of Environmental Protection Geographic Information System (GIS) digital data, in conjunction with the Atlantic County Office of Geographic Information Systems, but this secondary product has not been verified by NJDEP and is not state authorized. The geodetic accuracy and precision of the GIS data contained in this map has not been developed nor verified by a professional licensed land surveyor and shall not be nor is intended to be used in matters requiring delineation and location of true ground horizontal and/or vertical controls File: EstellManorMainTrailMapHandoutLegal3.mxd 7/12/2010